

Tow hook fitting and operating instruction **RENAULT Megane I Classic** (1996 - 03/1999 r.)

Nr kat. R-090

DESTINATION

Tow hook for **Renault Megane I Classic** is designed for towing a trailer. This part is certified with safety mark "B" issued by PIMOT (Polish facility granting certifications).

Assembling conditions:

Tow hook **R-090** can be used and operated in a car with proper technical conditions of body elements. These elements can not be mechanically damaged. Tow hook must be assembled and operated according to this instruction.

Operating conditions:

Tow hook **Renault Megane I Classic** includes a rating plate describing correct and safe loads of the hook:

WR - max. permissible load of a trailer,

WM - max. permissible load of a car

During operating individual elements of the tow hook should be kept in a proper technical conditions and protected from corrosion. The trailer must be linked with an elastic joint with proper durability (cord chain) while towing. It is necessary to check periodically bolt joints during operating the ball rod. If screws are eased it is necessary to screw them down.

Assembling instruction:

The ball hook for **Renault Megane I Classic** is made up of the following elements:

1. Tow bar mainframe	- 1 piece	9. Nut M10	- 3 pieces
2. Tow ball with support	- 1 piece	10. Nut M12	- 2 pieces
3. Electrical plate	- 1 piece	11. Flat washer 10,5	- 3 pieces
4. Distance sleeve 17,3/ 12,5x50	- 3 pieces	12. Flat washer 13,0	- 2 pieces
5. Special washer 40/ 12,5x2,5	- 5 pieces	13. Spring washer 10,2	- 3 pieces
6. Bolt M10x90	- 3 pieces	14. Spring washer 12,2	- 6 pieces
7. Bolt M12x30	- 4 pieces		
8. Bolt M12x90	- 2 pieces		

In order to mount the ball hook **Renault Megane I Classic** you have to obey the instruction below.

1. Rear bumper cutting **is required** (in the middle of the bumper strenghtening, made of plastic).
2. Dismantle the tow bar into kit-form elements.
3. From the right chassis side member unscrew the factory-made lashing eye. From the left chassis side member remove the exhaust silencer shield.
4. Put (1) to the inner side of chassis side members and attach it as follows:
 - into the right chassis frame member insert (4) - in the factory-made hole. Then insert (also from the external side) 3 pcs. of bolts (6) with (5). From the inner side screw using (9), (11) and (13).
 - into the left chassis frame member in the factory-made hole insert (4) (horizontally, from the external side). Then insert (also from the external side) the bolt (8) with (5) and from the inner side screw using (10), (12) and (14).
5. From the bottom of the left chassis side member drill straight through, vertically, a hole 12,5. Use the hole located in the left sidearm of (1). From the trunk side enlarge it to 17,5 (through one wall only).
6. In the previously drilled hole insert (4), then (8) with (5) from the upper side. Screw from the bottom using (10), (12) and (14).
7. Cut the middle part of the bumper strenghtening out and attach (2) using (7) and (14), screwing (3) on the left side of (2) at the same time.
8. Check if all fixing bolts and nuts are screwed hard enough.

31.05.2005.

Nr kat. R-090

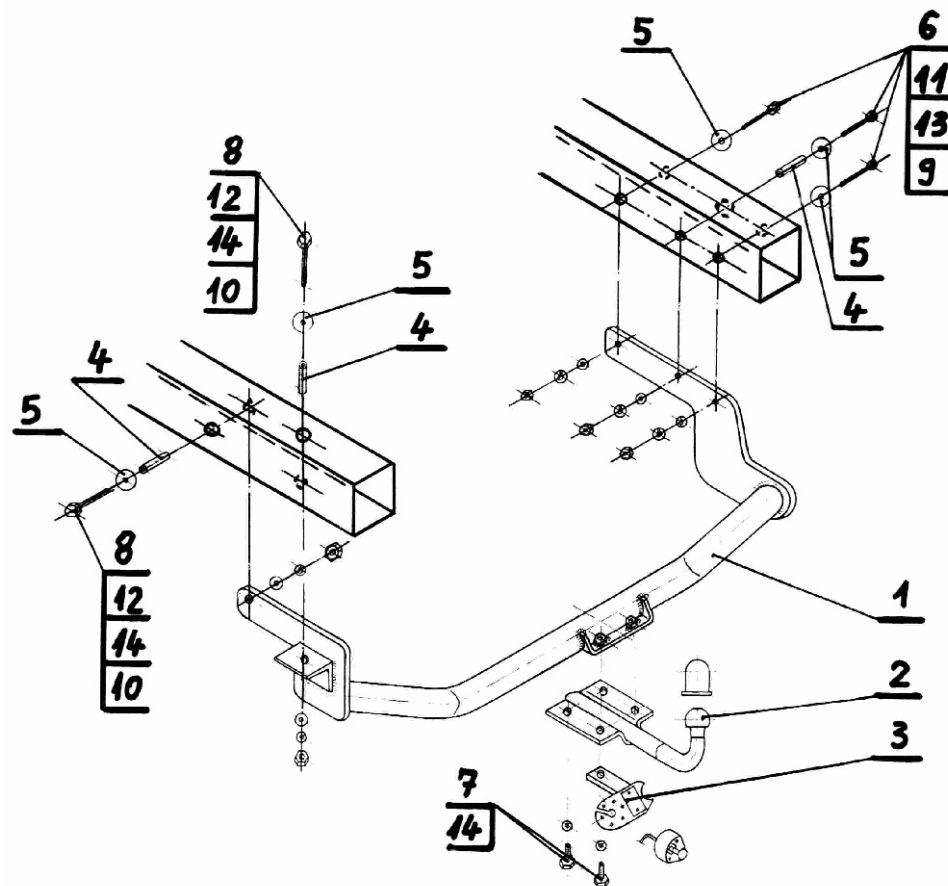
Obeying this instruction assures correct montage and the tow hook operating in Renault Megane I Classic.

After assembling of the ball hook **Renault Megane I Classic** you have to get entry in cars **registration book** in a quality control station .

CAUTION :

All mechanical damages of ball hook excludes its longer exploitation . Damaged ball hook **cannot be repaired**. The tow hook user should check bolt's joints periodically during operating time. In case of braking the rules of montage or improper usage manufacturer **do not take responsibility** for arised damages .

MONTAGE DIAGRAM :



NOTE :

Bunch of wires is not included (in total price).

Nr kat. R-090